



Bird-Shock[®] Flex-Track[™]



- WHERE TO USE** Any surface where total exclusion is the goal, and low visibility is key; parapets, roof peaks, beams, ledges.
- TARGET BIRD** All species
- BIRD PRESSURE** All pressure levels
- MATERIAL** UV-stabilized PVC and Stainless Steel
- INSTALLATION** Track glues to surface, electrical connectors allow current to flow from one track to the next.
- INSTALLATION LEVEL** Somewhat involved

U.S. PATENTS: 7,481,021 • 8,293,044 • 8,430,063 • 8,434,209 • 8,567,111, U.S. Design Patent: D684,235 S



Two rows of Bird-Shock with Quick Connect corners protect the top of this column from pest birds.



Bird-Shock takes a gentle bend to completely protect this parapet cap at a California school.



A single row of Bird-Shock at the top of this wall eliminated a bat infestation.

Patented

Bird-Shock Flex-Track is so good, and unique, it has been granted several patents by the US Patent and Trademark Office.

Flexible and Adaptable

This low-profile electrified track conforms to any architectural configuration. Flex-Track curves up and down, and side to side; and the stainless steel braid gently follows the UV-stabilized PVC base without wrinkling.

Almost Invisible

At only one-quarter of an inch high, and available in five different colors, Flex-Track is hard to see close-up, and invisible from a distance. It is not seen looking up from below.

Long-Lasting

Made from UV-stabilized PVC, and Stainless Steel, Flex-Track will be in service far longer than its five-year warranty.

Humane

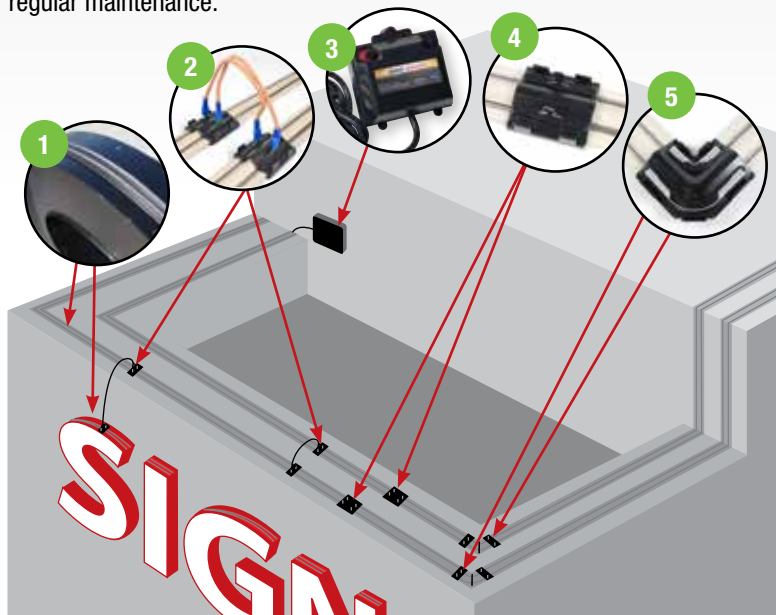
The intermittent shock is memorable, but does not hurt the birds; it simply teaches them to stay away, long-term.

Bird-Shock: Active Bird Control

Bird-Shock Flex-Track has changed the face of the bird control industry. One product is able to protect a wide variety of surfaces from all bird species, while at the same time being virtually invisible, and incredibly durable.

- 1) Flex-Track protects straight ledges, and curves easily to protect sign letters.
- 2) Jumpers snap quickly to the track, making it easy to power multiple tracks.
- 3) A charger unit mounts to the building and sends intermittent power down the two conductors.
- 4) Quick connectors are used every 50 feet, or wherever else connections are needed.
- 5) Corner Quick Connectors make 90 degree angles a snap.

Important Note: Electrified systems are active systems. They require regular maintenance.





Bird-Shock[®] Flex-Track[™]



Five colors to blend with the building.

Bird-Shock Flex-Track

The tracks come in 50-foot lengths. Each roll includes 11 straight connections and nine corner connections (crimp style, not Quick Connectors), which will accommodate normal applications.

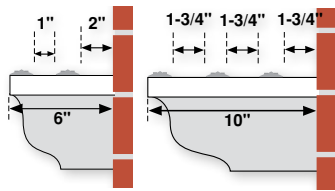
Univar
Part #

Black	BS-FB60	733358
Beige	BS-FBG60	733360
Brick Red	BS-FR60	733359
Gray	BS-FG60	733361
Sign-Red	BS-FSR60	646025

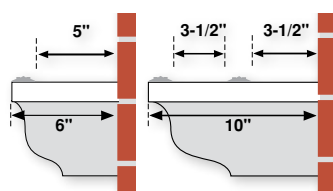
Recommended Spacing

One row of Flex-Track can protect the same width ledge as multiple rows of other products. Labor and material are therefore much less. Often just one row on the outer edge is enough.

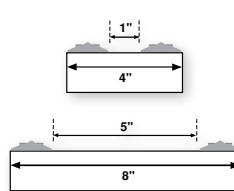
Small birds and/or heavy pressure



Large birds and/or light-medium pressure



Double-sided ledges



Anti-water damming pads stuck every 12 inches will allow water to flow under the track. 10 pads are included with each roll of track.



Quick Connectors



Use two Straight Connectors to jump power from track to track.



Quick Straight Connectors

Fast and easy to instal, attractive and ultra durable. Saves labor time and provides for a long-lasting installation. 20-pack.

Straight Connectors (20) BS-Q06 808505



Quick Corner Connectors

This connector is revolutionaly. It is low profile and features copper conductors over the entire surface. Straight cut the track, lay it inside the connector and snap the durable top down for an attractive connection.

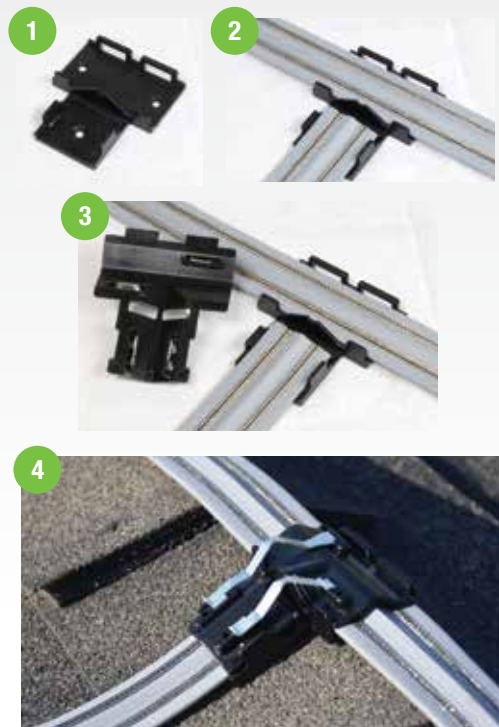
Corner Connectors (10) BS-Q07 808351



"T" Connector

Many jobs require time consuming T's. Now those can be done just as quickly as straight and corner connections. The part can also hinge up or down for angled applications, like roof peaks..

"T" Connectors (5) BS-Q08





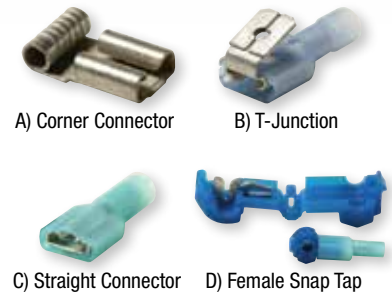
Bird-Shock® Flex-Track™

Standard Connectors

Some complicated projects need more connections. The kits below are available in addition to the standard set that comes with the flex-track. **A.** Corner (100 male, 100 female). **B.** T-Junction (100 male, 100 female, 50 piggyback). **C.** Straight (100 male, 100 female). **D.** Female Snap Tap (50 taps/kit)

A) Corner Connector Kit (ea.)	BS-Q20
B) T-Junction Kit (ea.)	BS-Q10
C) Straight Connector Kit (ea.)	BS-Q15
D) Connector Female Snap Tap	BS-QSK

Univar Part #
733347
733345
733346
654789



Flex Track Lead-out Wire

Twisted copper, 14 gauge double wire is easy to cut, strip & crimp. Available in 3 colors to match your job.

Lead Wire, black (50 ft.)	BS-LW10	733355
Lead Wire, black (250 ft.)	BS-LW65	812843
Lead Wire, beige (50 ft.)	BS-LW30	733357
Lead Wire, beige (250 ft.)	BS-LW60	806738
Lead Wire, gray (50 ft.)	BS-LW15	733356
Lead Wire, gray (250 ft.)	BS-LW70	806453



Lead Wire Guides

New, smaller and black for a less visible, tighter job.

Lead Wire Guides (100)	BS-LW45	639860
------------------------	---------	--------



Tools & Accessories

Connector Crimp Tool

Solid connections are a must for a long-lasting application. This tool delivers the perfect crimp.

Connector Crimp Tool (ea.)	TO-Q20	733351
----------------------------	--------	--------



Deluxe Wire Stripping Tool

This elegant tool easily strips wires, completely. It grabs, cuts and pulls the wire, you just squeeze. Use the #10 or #8 opening.

Deluxe Wire Stripping Tool	TO-Q15	636427
----------------------------	--------	--------



Warning Labels

Bold, plastic warning labels should be placed prominently. Glue or screw to the ledge or side of the building. 10/pack.

Warning Labels (10)	BS-WL10	652256
---------------------	---------	--------



Bird Barrier Bond

Bird Barrier Bond should be used to secure Bird-Shock Flex-Track to clean surfaces. A 10.2 oz. tube secures 30 - 35 ft. of track

New Bond 10.2 oz. (ea.)	HA-BB03	776954
Five Year Guarantee		
E6100 Clear 10.2 oz. (ea.)	HA-BB04	776732
One Year Guarantee		

See page 22 for important Bond information.



Bird Shock® Cellular Track Monitor

With the revolutionary, new alarm you are always only a text message away from knowing your track's condition and voltage. Instead of taking hours inspecting your track or wondering if it's working properly, Track Alarm will notify you within seconds of any track-related issue.

- Works with all chargers and track systems
- Receive Real-Time Alerts of your track condition via text or e-mail
- Set a Low-Voltage threshold to fit your needs
- Monitor your track status via a web-site, free mobile app or text
- View historical data of your track via the web-site or app
- Add additional users to your monitoring system so they can receive important alerts too
- Uses Solar Power and Cellular Technology, making it possible to easily install anywhere on your track (On average can run 30 days without direct sun)

Not available outside the US

Cellular Monitor	BS-TE20
------------------	---------



Attaching to your System

The Track Monitor has a hot and ground post, just like the chargers used to power all electrified track systems. The Track Monitor can be connected to the charger or the track. It can monitor an entire system at the charger, or a single length of track. It cannot monitor multiple tracks. Bird Barrier recommends connecting the Track Monitor directly to the charger, especially if the charger has multiple lead wires going to multiple tracks. Please call our offices for more details.





Bird-Shock® Flex-Track™

Standard Chargers

Small 120v. Plug-In Charger

Weatherproof, can be mounted outside (but make sure the plug itself is in a weatherproof housing).

Input Voltage: 120 VAC
Output Voltage (max): 9kV +/- 10%
Output Pulse Width at 500 Ohms: 100 uS
Output at 500 Ohms: 2.4kV, 0.16J

Sm. Plug-In Charger BS-CP30 632254



Small 12v. Solar Charger

Ideal for smaller projects. Features connectors on the bottom and an on/off switch.

Input Voltage: 12V DC
Output Voltage (max): 8.6kV +/- 10%
Output Pulse Width at 500 Ohms: 25uS
Output at 500 Ohms: 4.0kV, 0.14J

Sm. 12v. Solar Charger BS-CS30 655507
Replacement Battery BS-CS25 637923



Attach battery leads and charge for 2 days before activating.

110v. Small Charger

UL Approved, this intermittent charger powers up to 1,000 feet of Bird-Shock. Mount indoors in dry space. Flashing light indicates functionality of the system.

Input Voltage: 110-120 VAC, 60 Hz, 1VA
Output Voltage: 6,350 V (Unloaded), 730 V @ 500 ohm Load
Output Joules: 0.1

Sm. 110v. Solar Charger BS-CP00 649937



Small 4v. Solar Charger

Input Voltage: 4V DC
Output Voltage (max): 8kV (+/-) 20%
Output Pulse Width at 500 Ohms: 50uS
Output at 100 Ohms: 3.5A

Sm. 4v. Solar Charger BS-CS00 649940
Replacement Battery BS-CS05 649939



2 D-cell Battery Charger

Ideal for small jobs like signs that can't justify the cost of a large charger. Two D-Cell batteries will power the system for two months.

Input Voltage: 3 V DC, 13 mA
Output Voltage: 7.5 kV (+/-) 20% open circuit intermittent DC output

Battery Charger BS-CS15 674219



Large Birds / Large Jobs

These powerful chargers are capable of handling large runs of Flex-Track. They require specific installation methods and the use of a digital track tester.

NOTE: Installation of these units without regard to the installation instructions can result in visible and audible arcing or sparking. Please use appropriate care and call our specialists for job-specific recommendations.

Large 120v. Plug-In Charger

This charger is weatherproof, but must be plugged into a weatherproof receptacle. It features a blinking indicator light when operating. Powerful enough for most jobs.

Input Voltage: 120 Vac
Output Voltage (max): 8.8kV +/- 10%
Output Pulse Width at 500 Ohms: 75uS
Output at 500 Ohms: 5.6kV, 1.3J

Lg. Plug-In Charger BS-CP25 792823



Large 12v. Solar Charger

This solar powerhouse delivers plenty of shock and can be installed anywhere that gets several hours of sunlight every day.

Input Voltage: 12Vdc
Output Voltage (max): 8.6kV (+/-) 10%
Output Pulse Width at 500 Ohms: 25uS
Output at 500 Ohms: 5.4kV, 0.33J

Lg. 12v. Solar Charger BS-CS20 674209
Replacement Battery BS-CS25 637923



Charger Accessories

Battery Trickle Charger

Charge Solar Charger batteries quickly or during extended periods of cloudy weather.

Trickle Charger BS-TE30



Digital Voltage Tester

Make sure your system is sending the correct amount of electricity. Tester reads in 1,000-volt increments.

Voltage Tester BS-TD10 649947



Power Indicator

Attach these to the track and the building. Flashing indicates the system is functioning properly. Can be seen from distance at night.

Voltage Indicator BS-TE15 673147



Talk to an Expert. We will help you succeed: 800-503-5444.